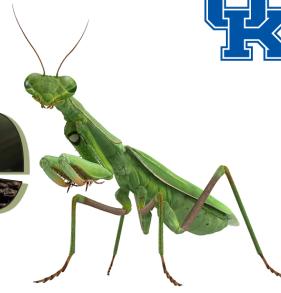


# Boone County Horticulture

May-Jun 2024 Newsletter



## Growing and Submitting for the Boone County Fair

*By Robert Brockman  
Boone County Extension Agent  
for Horticulture*

The Boone County Fair has changed dates and is now the fourth week of June rather than the first week of August. The dates in 2024 will be June 24th through the 29th. Those wishing to submit fruits, vegetables, or crops will need to drop off the submission on Sunday, June 23rd, between 2PM and 5PM at the Vegetables and Crops Exhibit Building. All exhibits must be picked up on Sunday June 30th between 2PM and 4PM. With the fair moving up six weeks, different types of fruits, vegetables, and crops will be mature. Because of this, fair categories will be changing to better match what is ready at that time. A few of the notable additions to the fair will include blueberries, strawberries, cherries, the largest cabbage, peas, and several root crop categories. Additionally, a few categories that have seen few submissions in years past (and may have less competition) include maple syrup, chunk honey, frames of honey, onions, carrots, and garlic. Make sure that your submissions are in the right category and meet the specifications. Please take a look at our updated categories on page 6 of this newsletter, by stopping by our office or by checking out the virtual fair book at <https://boonecountyfair.org/catalog/> Our categories are on pages 60-62.



*(Continued)*

### Cooperative Extension Service

Agriculture and Natural Resources  
Family and Consumer Sciences  
4-H Youth Development  
Community and Economic Development

### MARTIN-GATTON COLLEGE OF AGRICULTURE, FOOD AND ENVIRONMENT

Educational programs of Kentucky Cooperative Extension serve all people regardless of economic or social status and will not discriminate on the basis of race, color, ethnic origin, national origin, creed, religion, political belief, sex, sexual orientation, gender identity, gender expression, pregnancy, marital status, genetic information, age, veteran status, physical or mental disability or reprisal or retaliation for prior civil rights activity. Reasonable accommodation of disability may be available with prior notice. Program information may be made available in languages other than English. University of Kentucky, Kentucky State University, U.S. Department of Agriculture, and Kentucky Counties, Cooperating. Lexington, KY 40506



Disabilities accommodated with prior notification.

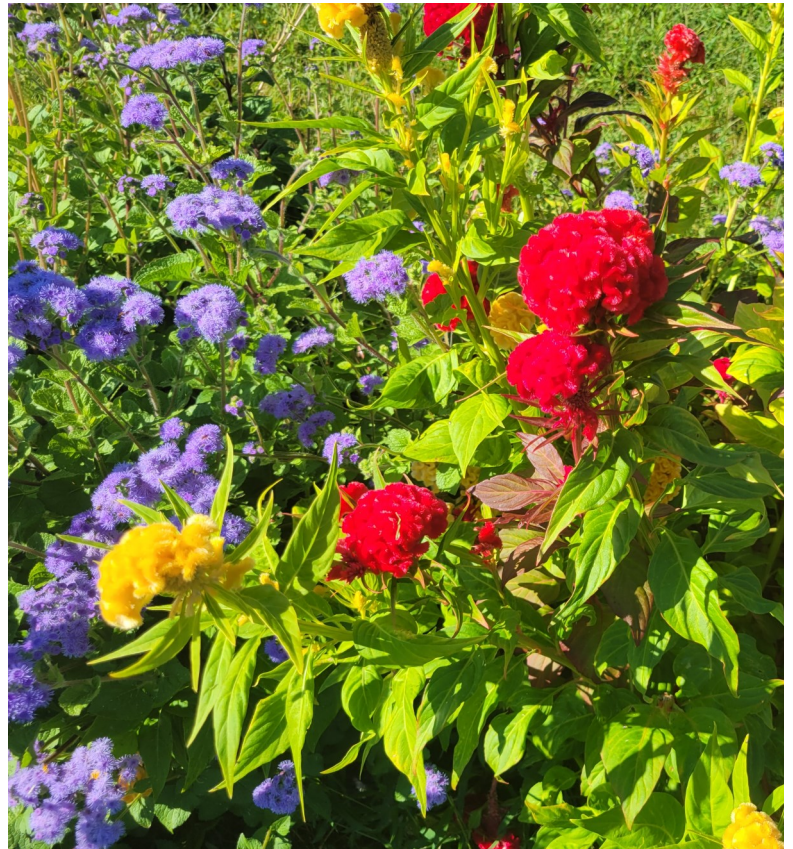
### Guidelines for Displaying Fruits & Vegetables

1. Be ripe but not overly ripe with minimal blemishes.
2. "Largest" classes should not be overly ripe, but may have blemishes.
3. Classes with more than one fruit/vegetable (i.e., 5 red tomatoes) are not too overripe or blemished, but be the same size, shape, and color.
4. Root vegetables are to have tops attached for display.
5. Clean entries of dirt with a dry/damp cloth.
6. Sweet corn is to include silk and husk.

## Cut Flower Programs

*By Robert Brockman  
Boone County Extension Agent  
for Horticulture*

Over the past year, we have started to receive a large number of calls and questions about raising cut flowers. Because of this, we have decided to host a short series of cut flower programs. On May 14th, there will be a beginner program for raising cut flowers. This program will be focused on those wanting to learn basic gardening skills and understand some of the flower species most useful in the cut flower garden. On July 16th, we will have a garden walk at the Boone County Nature Center Gardens. During that walk you will get a chance to see a large number of annual and perennial cut flower species, and learn how we are growing them. Shortly after our garden walk, we will have a flower arranging program at the Boone County Nature Center. The date for this flower arranging is TBD. This program will be hands-on and will give you ideas of how to make a floral arrangement. Registration for these programs will open one month before the program happens.



## Quick TIP

Some herbaceous perennial plants like phlox, peonies etc. may require staking before the lush new growth begins to flop over and flower buds begin to form. Utilize special plant support stakes or bamboo stakes now to hold up those flowers that will be coming soon!

## Lawn Care Tips: Going Green Through the Seasons

*By Joe Smith  
Boone County Extension  
Horticulture Technician*

It is that time of year again to be making your way back out into the great outdoors and sprucing up your yards and landscapes! Many people go to great lengths and take much pride in the way the land around their homes look. This can be an expensive undertaking, but beneficial to the aesthetics, and equity of your home. Here are a few tips to minimize the cost of keeping a healthy green lawn throughout the spring and summer months, and to reduce your impact on the environment around you. Don't use unnecessary chemicals and fertilizers. Go Green!



### Spring:

- ✓ A mowing height of 2.5-3 inches promotes better root growth.
- ✓ Aerify if needed. Test with a pocket knife. If a knife blade pushes easily into moist soil, there should be plenty of air space in the soil. If not, soils may be compacted and need core aerification.
- ✓ Don't fertilize, Spring/Summer nitrogen encourages disease and problem weeds like crabgrass.

### Summer:

- ✓ Raise mowing heights. Studies show that allowing your cool season grasses to grow longer prior to/during stressful summer months decreases competition of undesired weedy grasses species.
- ✓ Irrigate only when needed. Going green includes reducing water consumption, but if needed then Irrigate **FULLY BUT INFREQUENTLY**.

### Fall:

- ✓ Best time to plant grass seed. Planting in early fall (late August - early October) decreases undesired competition. Cooling nights and timely rainfall promote growth. Five to seven months of root development will occur before summer stress.
- ✓ Fertilize in the fall, but **only as needed!** Fall fertilization has many advantages including better root development as well as less maintenance during the next growing season.
- ✓ Soil testing is always recommended before application of fertilizers or lime/sulfur, and will give the proper recommendations for fertilizing. Contact your local Cooperative Extension Service for instructions on soil testing

## Garden Journaling

*By Melissa Pilcher  
Boone County Extension  
Horticulture Technician*



What is the point of keeping a garden journal? For one, it's a great way to celebrate your successes. To look back and see how long ago you planted that tree, or shrub, or perennial that you love and that is still thriving is so rewarding. It is also a way to acknowledge how you have grown as a gardener through seeing your failed attempts and the experience and wisdom that you have gained.

What makes a good garden journal? It can be as individual as the person keeping it. Start by selecting a format. There are journals you can buy, or you can keep a binder or a notebook. There are apps to download and print pages, or if you prefer, your journal can be completely digital.

Decide what kind of information you want to track. Typically, a journal might include a sketch or blueprint of your garden(s). You might also include some photographs. It's easy to forget what you have planted where, or what needs to be moved or divided without documentation. It's also great information to have to pass on to a buyer if you ever decide to sell your house.

Another thing to keep in your journal are dates. Things like dates that you started which seeds, how quickly they germinated, when you put them outside, and days until harvest. Write down when perennial plants, trees, and shrubs were planted. And don't forget to include the year, as after a while, they start to bleed together! It helps to track tasks such as fertilizing, dividing, when soil tests were done, followed by what amendments were made to the soil.

Keep track of rainfall, frost dates, average temperatures, pests, disease, and anything else that might have affected the season.

For vegetable gardeners, keep track of harvest dates and weights. Note which varieties had the best yields, tasted the best, or were bothered by, or free of pests.

And finally, a garden journal is the perfect place to dream, to imagine what could be with time and energy. Add pressed flowers, stickers, inspirational photos, drawings, whatever brings you joy. Like most things worth pursuing in life, gardening is a journey. Experience is the best teacher, and if you're learning, you are growing. And isn't GROWING the reason why we are so passionate about gardening?

For free garden journaling resources, check out:

<https://store.extension.iastate.edu/product/April-Garden-Journaling-Gardening-to-Give>

<https://www.botanicalinterests.com/products/garden-journal>

<https://www.ndsu.edu/agriculture/extension/publications/garden-journal>

For a free download of the University of Kentucky "Growing Your Own Garden Calendar," go to:

<https://www.planeatmove.com/blog/growing-your-own-garden-calendar/>

## Beautiful Dahlias

*By Robert Brockman  
Boone County Extension Agent  
for Horticulture*



Dahlias (*Dahlia spp.*) are tropical perennial flowers that come from Central America and northern South America. They are herbaceous, meaning that their aboveground tissues will die in the winter, but will resprout from their perennial root system. Being a tropical plant, dahlias need special care if they are going to last from year to year. That special care will be discussed below.

Dahlias are typically grown either as a bedding plant or for their cut flowers. They come with many different colors of flowers and foliage, as well as plant height and flower form. Those varieties grown for their cut flowers should be tall, to allow for proper arranging. See our article on cut flower programs if you are interested in growing your own cut flowers.

The best planting sites are those that are well drained, fertile, and have full sun to partial shade. Dahlias can be grown from seed or tuber, but the taller forms tend to come from tuber. You must continue to dead head spent flowers if you want your plant to continue flowering all season.



*Photos by Kathleen Moore*

If you want to grow your dahlia as a perennial, you must protect the tubers from temperatures below 25°F. To do this in our climate, it is best to dig up the tubers in the fall, remove excess soil using a brush and store the dried tuber in dry sand or vermiculite at a temperature of 35-45°F until planting in the spring. In the spring, tubers should be planted three inches deep and properly mulched.



## Quick TIP

May 5 is usually “safe” for planting tomatoes and peppers and most flowering annuals, **but** be ready to cover them overnight with cloth sheets or cardboard boxes through mid-to late May, just in case we have an unusually late freeze!



# 2024 Boone County Fair

**June 24-29, 2024**

**FRUIT & VEGETABLE DISPLAY  
OPEN TO THE WORLD**

*(VEGETABLES & CROPS EXHIBIT BUILDING)*

**Agent: Robby Brockman**

Jim Roth, Superintendent (859-462-0349)

Jim Brown, Assistant Superintendent (859-630-2563)



**FRUIT & VEGETABLES ARE ENTERED SUNDAY, JUNE 23 BETWEEN 2PM - 5PM**

No	Class	1st	2nd	3rd	No	Class	1st	2nd	3rd
001	1 dozen Green Beans, Bush .....	\$4.00	\$3.00	\$2.00	047	Plate 3 Large Paste Tomatoes (stems removed)			
002	1 dozen Half Runner Beans.....	4.00	3.00	2.00		.....	4.00	3.00	2.00
003	1 dozen Lima Beans in shell .....	4.00	3.00	2.00	048	Tomato Collection (6 or more varieties, each labeled)			
004	1 dozen Pole Beans.....	4.00	3.00	2.00		.....	4.00	3.00	2.00
005	1 dozen Yellow Wax Beans .....	4.00	3.00	2.00	49	Display 5 Vegetables (all different) .....	6.00	5.00	3.00
006	3 Colored Beets.....	4.00	3.00	2.00	050	Basket Display of Various Small Gourds (past or present)			
007	Plate 3 Beets (tops on).....	4.00	3.00	2.00		.....	6.00	5.00	3.00
008	1 Green Cabbage, flat head on plate, .....	4.00	3.00	2.00	051	Best Display of Culinary Herbs.....	4.00	3.00	2.00
	no wrapper leaves					(Must be kept watered as needed by Exhibitor)			
009	1 Green Cabbage, round head on plate, .....	4.00	3.00	2.00	052	Most Unusual Vegetable (with label) .....	4.00	3.00	2.00
	no wrapper leaves .....	4.00	3.00	2.00	053	Vegetable Basket Display .....	6.00	5.00	3.00
010	1 Red Cabbage on plate, no wrapper leaves.....	4.00	3.00	2.00	054	Franklin Brown Award (for most blue ribbons for			
011	Largest Cabbage by weight .....	4.00	3.00	2.00		fruits & vegetables)* .....	\$25.00	\$15.00	\$5.00
012	1 Chinese Cabbage.....	4.00	3.00	2.00		* See below for details.			
013	1 Kohlrabi.....	4.00	3.00	2.00					
014	5 Brussels Sprouts.....	4.00	3.00	2.00					
015	1 Burpless Cucumber .....	4.00	3.00	2.00					
016	Plate 3 pickling Cucumbers.....	4.00	3.00	2.00					
017	Plate 3 slicing Cucumbers .....	4.00	3.00	2.00					
018	10 Snow Pea Pods.....	4.00	3.00	2.00					
019	10 Sweet Pea Pods.....	4.00	3.00	2.00					
020	Bunch of Rhubarb .....	4.00	3.00	2.00					
021	Plate of 3 Bulbs of Garlic.....	4.00	3.00	2.00					
022	Bunch of Collards .....	4.00	3.00	2.00					
023	Best Head of Broccoli.....	4.00	3.00	2.00					
024	Best Head of Cauliflower .....	4.00	3.00	2.00					
025	Plate of 3 Radishes.....	4.00	3.00	2.00					
026	Largest Turnip .....	4.00	3.00	2.00					
027	Plate 3 Onions, red/purple .....	4.00	3.00	2.00					
028	Plate 3 Onions, white.....	4.00	3.00	2.00					
029	Plate 3 Onions, yellow .....	4.00	3.00	2.00					
030	Plate of 3 Orange Carrots .....	4.00	3.00	2.00					
031	Plate of 3 Colored Carrots.....	4.00	3.00	2.00					
032	Longest Carrot, no forking .....	4.00	3.00	2.00					
033	Plate of 3 Sweet Peppers .....	4.00	3.00	2.00					
034	Plate of 3 Hot Peppers .....	4.00	3.00	2.00					
035	Plate of 3 Miscellaneous Peppers, .....	4.00	3.00	2.00					
	(all same variety)	4.00	3.00	2.00					
036	Plate 3 Red Potatoes.....	4.00	3.00	2.00					
037	Plate 3 White Potatoes .....	4.00	3.00	2.00					
038	Best Acorn Squash .....	4.00	3.00	2.00					
039	Best Butternut Squash .....	4.00	3.00	2.00					
040	Best Miscellaneous Squash.....	4.00	3.00	2.00					
041	Best Spaghetti Squash.....	4.00	3.00	2.00					
042	Best Squash, Yellow Crookneck .....	4.00	3.00	2.00					
043	Best Squash, Yellow Straightneck .....	4.00	3.00	2.00					
044	Best Zucchini Squash, green, not over 8" long .....	4.00	3.00	2.00					
045	Plate of 3 Small Salad Tomatoes (stems removed). .....	4.00	3.00	2.00					
046	Plate of 3 Tomatoes, Full Size (stems removed) .....	4.00	3.00	2.00					

**FRUIT**

055	Blueberries, A plate of 10 .....	4.00	3.00	2.00
056	Blackberries, A plate of 12.....	4.00	3.00	2.00
057	Sweet Cherries, A plate of 5 .....	4.00	3.00	2.00
058	Tart Cherries, A plate of 5 .....	4.00	3.00	2.00
059	Mulberries, A plate of 5.....	4.00	3.00	2.00
060	Strawberries, A plate of 5.....	4.00	3.00	2.00
061	Largest Strawberry .....	4.00	3.00	2.00
062	Raspberries, A plate of 12 .....	4.00	3.00	2.00
063	Best plate 3 Peaches.....	4.00	3.00	2.00

▶ **PLEASE NOTE** ◀  
 All exhibits in the Vegetable & Crop Exhibits Building  
 will be released on  
**Sunday, June 30 from 2:00 PM until 4:00 PM.**  
 Anything not picked up by 4:00 PM that day will be disposed of.

**Franklin Brown Awards**  
*The "Franklin Brown Awards" will go to the 4-H individual and the Open Class individual receiving the most blue ribbons in fruits and vegetables at the fair. In case of a tie, one winner will be chosen, based on number of blues (3 pts. each), number of reds (2 pts. each) and number of whites (1 pt. each). A plaque for each will be on display at the Boone County Extension Office.*

## Congratulations Master Gardener Interns!

*By Joe Smith  
Boone County Extension  
Horticulture Technician*

Our Master Gardener Program of 15 weeks has come to an end on April 4th. The Intern Master Gardeners that just completed the classroom portion will now be going out in the community to acquire their volunteer hours at our approved volunteer sites throughout Northern Kentucky

Our Master Gardener volunteers are an integral part of extension and our Horticulture team here at Boone County. We feel privileged and excited to begin work with these new Master Gardener Volunteers.

We are proud of their accomplishments and now are excited for them to share their passion for gardening and helping others in the community!



For more information or if you have questions, contact us—we are here to help!

859-586-6101 • [boone.ca.uky.edu](http://boone.ca.uky.edu)

**Robert Brockman**

Boone County Extension Agent  
for Horticulture

**Joe Smith**

Boone County Extension  
Horticulture Technician

**Melissa Pilcher**

Boone County Extension  
Horticulture Technician

For More Information...

For more information or to register for any of our classes, visit our website at [boone.ca.uky.edu](http://boone.ca.uky.edu).  
Click "Online Class Registration" or call us at 859-586-6101.

# Upcoming Horticulture Events *Please Register!*

## Gardening with Kids

► May 7, 4:00-5:30pm

*Boone County Enrichment Center*

Garden with your children! Class is targeted for kids ages 6-9.

## Residential Rain Gardens

► May 13, 6:00-7:30pm

*Florence BCPL*

*(7425 U.S. Hwy 42, Florence)*

Explore what it takes to design and construct a residential rain garden. Please register at the BCPL website.

## Cut Flower Gardening for Beginners

► May 14, 6:00-7:30pm

*Boone County Enrichment Center*

Do you love the look of fresh cut flowers but have little to no gardening experience and don't even know where to start? If so, this class is for you! Join us as we go over the **very basics** of growing cut flower gardens in your own backyard.



## Urban Trees

► May 21, 6:00-7:30pm

*Boone County Enrichment Center*

Come and learn what species of trees do well in urban and suburban areas of the tri-state.

## Preventing Stress on your Landscape Trees

► June 10, 6:00-7:30pm

*Virtually via Zoom*

Join us for what you can do to keep your landscape trees healthy and happy!

## What's Wrong with My Tomatoes!?

► July 9, 1:00-2:30pm

*Boone County Enrichment Center*

This class will focus on challenges that tomatoes are facing, as well as possible solutions.

## Don't Get Squashed!

► July 11, 1:00-3:00pm

*Boone County Enrichment Center*

Do you like summer squash but have a hard time either growing or consuming it? Join us for growing tips and delicious recipe ideas.

## Cut Flower Garden Walk

► July 16, 6:00-7:30pm

*Boone County Nature Center Gardens*

Join us as we walk and talk about the cut flower plots at the Boone County Nature Center Gardens.

## Flower Arranging for Beginners

► Date is TBA (after July 16)

*Boone County Nature Center Gardens*

This will be a hands on program where you see our cut flower plots and work on making floral arrangements.



# Find us here...

## Extension Campus Location Key:

Virtual via Zoom, Must register to receive Zoom link 🏠  
**Extension Service office**, 6028 Camp Ernst Rd., Burlington  
**Enrichment Center**, 1824 Patrick Dr., Burlington  
**Farmers Market**, 1961 Burlington Pk., Burlington  
**Environmental and Nature Center**, 9101 Camp Ernst Rd., Union  
**Boone County Arboretum**, 9190 Camp Ernst Rd., Union; Register at: [www.bcarboretum.org/](http://www.bcarboretum.org/)